

FISHWAY STATUS REPORT

Date: 9/24/2012
 Inspection Period: 9/16 - 9/22/2012

THE DALLES DAM



**US Army Corps
 of Engineers**
 Portland District

The Dalles Project-Fisheries
 P.O. Box 564
 The Dalles, OR 97058-9998
 Phone: 541-506-3800

Fishways are inspected twice daily. Additional daily monitoring done via automation system in fisheries office.

The Dalles Dam	Inspections	Criteria	Total Number of Inspections:	21	Temperature:
	Out of Criteria	Limit	Comments		Secchi: 5.4 Ft.
NORTH FISHWAY					
Exit differential	0	≤ 0.5'			
Count station differential	0	≤ 0.3'	Window cleaned 9/17.		
Weir crest depth	0	1.0' ± 0.1'			
Entrance differential	0	1.0' - 2.0'	Average 1.3	Daily differentials & weir depths, see AVGS tab.	
Entrance weir N1	0	depth (≥ 8')	Average 9.0		
Entrance weir N2		Closed	Bulkhead installed		
PUD Intake differential	0	≤ 0.5'			
EAST FISHWAY					
Exit differential	0	≤ 0.5'			
Removable weirs 154-157	0	Per forebay	Auto adjusts 1' increments.		
Weir 158-159 differential	0	1.0' ± 0.1'			
Count station differential	0	≤ 0.3'	Picket leads raked on 9/17, 9/19, 9/22. Window cleaned 9/17, 9/20.		
Weir crest depth	0	1.0' ± 0.1'			
Junction pool weir JP6	1	depth (≥ 7')	Manually adjusted as needed.	Out of criteria at 6.8.	
East entrance differential	0	1.0' - 2.0'	Average 1.5	Daily differentials & weir depths, see AVGS tab.	
Entrance weir E1	0	No criteria	Average 8.3	Manually adjusted.	
Entrance weir E2	0	depth (≥ 8')	Average 10.3		
Entrance weir E3	0	depth (≥ 8')	Average 10.3		
Collection channel velocity	0	1.5 - 4 fps	Average 1.9	See Velocities tab for more complete information.	
Transportation channel velocity	0	1.5 - 4 fps	Average 2.5		
North channel velocity	0	1.5 - 4 fps	Average 2.3		
South channel velocity	0	1.5 - 4 fps	Average 3.5		
West entrance differential	0	1.0' - 2.0'	Average 1.2		
Entrance weir W1	0	depth (≥ 8')	Average 8.1		
Entrance weir W2	0	depth (≥ 8')	Average 8.2		
Entrance weir W3	0	No criteria	Average Closed		
South entrance differential	0	1.0' - 2.0'	Average 1.4	Daily differentials & weir depths, see AVGS tab.	
Entrance weir S1	0	depth (≥ 8')	Average 8.3	Manually adjusted.	
Entrance weir S2	0	depth (≥ 8')	Average 8.2		
JUVENILE PASSAGE					
Sluiceway operation	0	units 1,8,18			
Turbine trashrack drawdown	0	<1.5', wkly	Range: 0.1' - 0.7'		
Spill volume	0	40%, 24hr	On seal		
Spill Pattern	0	per FPP	On seal		
Turbine Unit Priority	0	per FPP			
Turbine 1% Efficiency	0	per FPP			

OTHER ISSUES:**THE DALLES****Birds:**

Bird observations consist mostly of cormorants resting either on rocks near east fishladder entrance or roosting on the north towers. See bird tab below for information on species, number and location. Fisheries personnel are collecting bird count data twice daily.

Operations:

Gatewell drawdown was completed on 9/17. All differentials were within criteria and ranged from 0.1' - 0.7'. Calibration completed on 9/20. Entrance weirs in criteria. West entrance tailwater and south entrance tailwater out of criteria 0.2' and 0.1' respectively. MU 15 scroll case fish salvage 9/18. There were no fish observed in the unit.

Maintenance:

Draft fishway dewatering schedule out for review.
Winter maintenance to include east fishladder diffuser grating install completion and the north fishladder brush removal.

Current Outages:

MU- 20 leaks air and cannot maintain condensing ability 0515 hrs. 9/16.
MU-13 out of service 8/13 0705 hrs. to 9/20 1700 hrs. for digital governor install and annual maintenance.
MU-22 out of service 9/4/ 0609 hrs. to 10/11 1700 hrs. for digital governor install and annual maintenance.
MU-19, MU-20, and T10 out of service 0615 hrs. 9/17 for T10 three doble, NERC/FERC/WECC - oil winding temperature gauge.
MU-15 was taken out of service on 9/16 at 0515 hrs. due to smoking caused from damaged turbine packing, and restricted gland water flow. Return to service 9/21 1700 hrs.
T-11 was taken out of service at 0621 hrs. on 9/12 for fall protection installation.
MU-21 out of service and expected return to service 9/18 1700 hrs.

Studies:

The Adult PIT Antennae Study Team and Alden Research Laboratory (hydraulic modeling and consulting) site visit 9/21.
Pacific States Marine Fisheries Commission (PSMFC) PIT Tag Information System (PTAGIS) team plans to set up radio frequency noise detectors at count stations. This is in preparation for the installation of the Thin Wall PIT Tag Antennas.
Inland Avian Predation Work Group (IAPWG) scheduled at Westrick 9/27 at 0900.
East fishway backup water supply study, no activity.

Research/Contractors:

United States Fish and Wildlife Service dual frequency identification sonar (DIDSON) camera testing continues at North Fishway exit for lamprey detection.
The Columbia River Northern Pikeminnow Management Program Dam Angling: 49 pikeminnow for 31 hours effort.
Oregon Fish and Wildlife have concluded Columbia River Predator Control Program bass angling activities at The Dalles. Results pending.
The final season for Pacific Northwest National Laboratory (PNNL) Battelle juvenile acoustic telemetry completed. Summer testing results for 2012 pending.
Battelle's field crew will be on the project next week for a few days, removing hydrophones and cables and other equipment from the powerhouse and spillway road decks.
A dive contract is expected to occur this winter in order to remove all spillway and powerhouse equipment. This will include derelict USGS equipment from previous studies.
Washington Department of Fish and Wildlife fish counters continuing 16 hr./day through the end of October.

Approved by;
Ron D. Twiner
Operation Project Manager
The Dalles Dam

The Dalles Dam Fish Counts

Date	East	North	East	North	Total	Total	East	North					East	North					KCFS
	Chinook	Chinook	Chinook	Chinook	East	North	Unclipped	Unclipped	East	North	East	North	Coho	Coho	East	North	East	North	Spill
	Adult	Adult	Jack	Jack	Sthd	Sthd	Sthd	Sthd	Sock	Sock	Coho	Coho	Jack	Jack	Lamprey	Lamprey	Pink	Pink	Volume
9/16/12	10348	797	4818	334	2929	462	566	132	0	0	1477	294	60	14	26	23	0	0	O n s e a l
9/17/12	9253	679	5204	355	2687	244	767	23	0	0	1996	270	58	23	25	16	0	0	
9/18/12	6058	559	4499	410	2165	212	329	62	0	0	1552	248	126	13	10	13	0	0	
9/19/12	4748	227	3172	233	2138	160	546	26	0	0	1004	134	44	5	11	8	0	0	
9/20/12	3895	223	3514	216	2008	258	521	64	0	0	647	122	72	7	11	11	0	0	
9/21/12	4144	186	2794	240	1999	226	524	64	0	0	317	79	52	7	5	19	0	0	
9/22/12	3419	232	2934	160	3055	321	900	74	0	0	499	17	38	1	12	8	0	0	
weekly tot	41865	2903	26935	1948	16981	1883	4153	445	0	0	7492	1164	450	70	100	98	0	0	
% Split	93.5%	6.5%	93.3%	6.7%	90.0%	10.0%	90.3%	9.7%	0.0%	0.0%	86.6%	13.4%	86.5%	13.5%	50.5%	49.5%	0.0%	0.0%	
Spill gates on seal																			

The Dalles Dam Daily Bird Observations

Washington Shore

SW-T1: Cormorant - one resting.

SW-T3: Cormorants - one foraging, nine - 39 resting; Gulls - two - 3 resting; one grebe foraging.

SW-T4: Gulls - one to two resting; Grebe - one resting.

FB1: Cormorants - three foraging, two - 68 resting; Grebe - one - 22 resting; Gull - one fly-by; Great Blue Heron - one resting; Osprey - one resting.

SW-T2: Cormorants - one - three foraging, one - 32 resting; Osprey - one resting; Grebe - one resting.

PH-T1: Cormorants - two - three foraging, seven - 53 resting; Great Blue Heron - one resting; Merganser - one - four resting; Gulls - one resting; Osprey - one resting, one foraging; Grebe - one resting, one foraging.

PH-T2: Cormorants - one foraging and one resting.

PH-T3: Osprey - one foraging and one resting; Gulls - one to three fly-by.

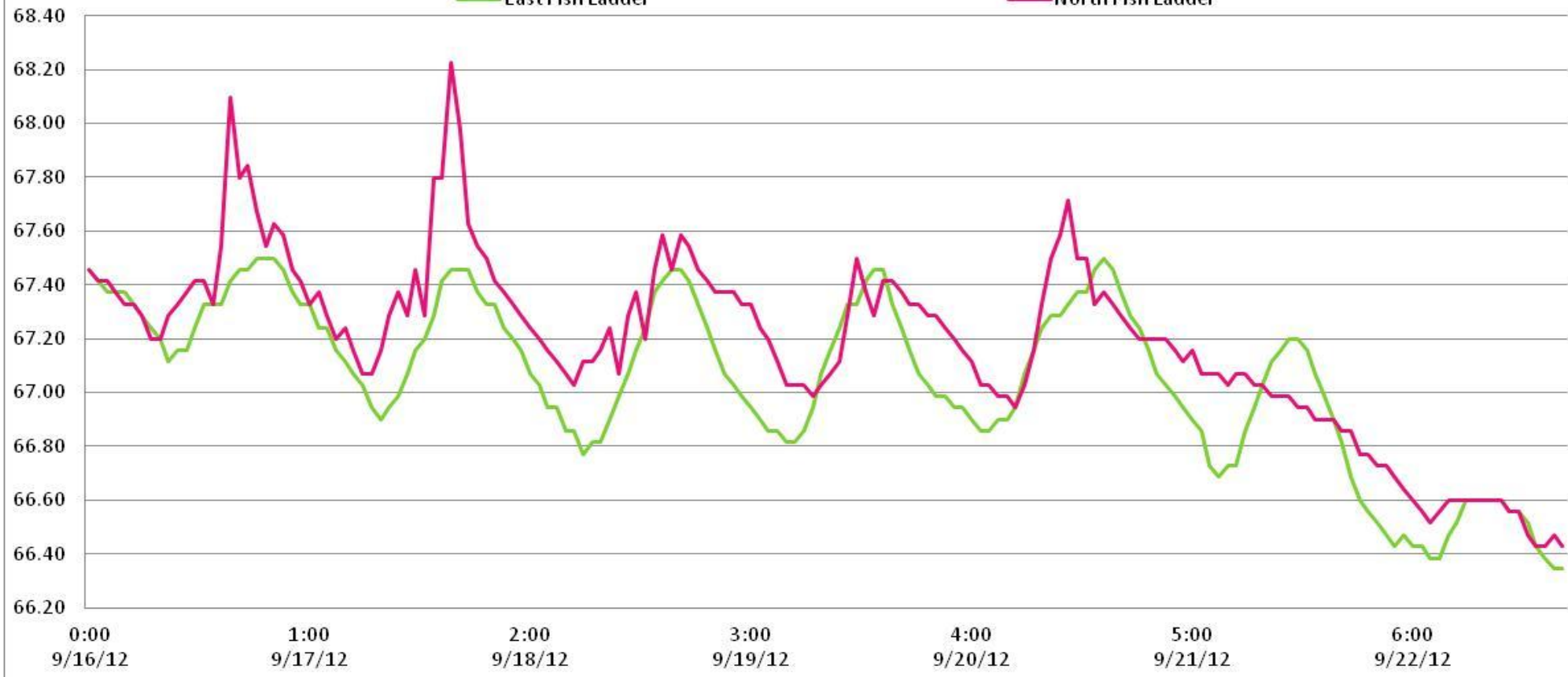
Oregon Shore

The Dalles Adult Fish Ladder Water/Temperatures

°F

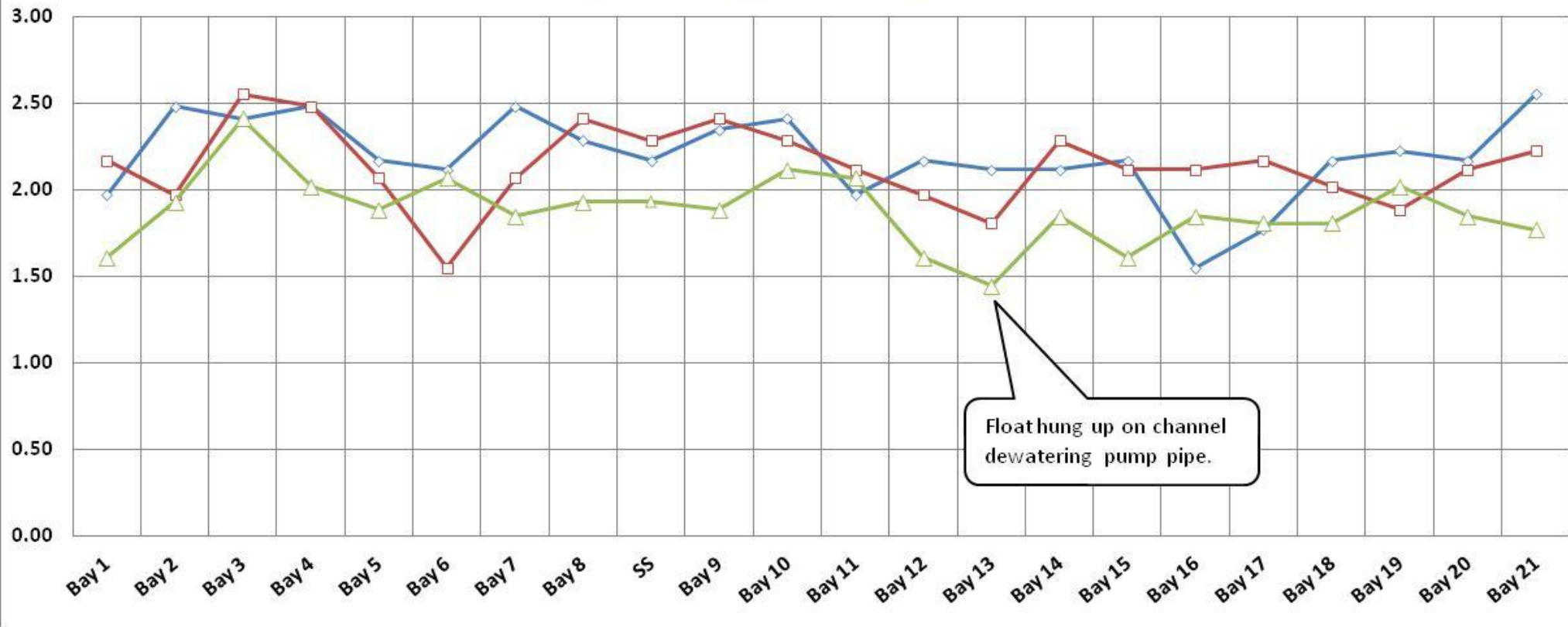
East Fish Ladder

North Fish Ladder



The Dalles Dam Collection Channel Velocities (fps)

9/4/2012 9/10/2012 9/20/2012



Temp:		Secchi:
	SUN	5.0
	MON	5.0
	TUES	5.0
	WED	7.0
	THUR	5.0
	FRI	5.5
	SAT	5.5
AVG:	#DIV/0!	5.4

The Dalles Dam Daily Readings and Averages for Temperatures, Secchi, Entrances, and Spill

North Fish Ladder			East Fish Ladder												% Spill
North Entrance		East Entrance						West Entrance				South Entrance			
Date:	Differential	N1 Depth	Differential	E1Depth	E2 Depth	E3 Depth	JP 6	Differential	W1Depth	W2 Depth	W3 Depth	Differential	S1 Depth	S2 Depth	
9/16/12	1.2	8.9	1.5	6.0	11.0	10.9	6.8	1.3	8.3	8.3	Closed	1.4	8.5	8.6	
9/16/12	1.2	9.1	1.5	6.0	11.1	10.7	8.5	1.2	8.2	8.2		1.5	8.4	8.4	
9/16/12			1.4	6.1	11.1	11.0		1.2	8.4	8.4		1.4	8.6	8.5	
9/17/12	1.2	8.3	1.5	5.9	10.8	10.7	7.0	1.1	8.1	8.2		1.5	8.0	8.0	
9/17/12	1.2	9.0	1.6	6.1	11.1	11.1	8.0	1.1	8.0	8.3		1.3	8.3	8.3	
9/17/12			1.5	6.1	10.4	10.4		1.0	8.5	8.5		1.4	8.3	8.3	
9/18/12	1.3	9.0	1.6	9.1	9.6	9.5	7.6	1.2	8.0	9.1		1.4	8.2	8.2	
9/18/12	1.3	10.2	1.7	8.9	9.5	9.5	8.9	1.3	8.2	8.0		1.5	8.3	8.2	
9/18/12			1.5	9.1	9.6	9.5		1.0	8.1	8.2		1.4	8.2	8.3	
9/19/12	1.3	9.0	1.5	9.5	10.0	10.0	8.7	1.2	8.0	8.1		1.5	8.2	8.1	
9/19/12	1.4	9.0	1.8	9.5	9.9	10.0	10.2	1.4	8.0	8.1		1.5	8.3	8.3	
9/19/12			1.3	10.5	10.5	10.5		1.1	8.1	8.1		1.4	8.2	8.1	
9/20/12	1.2	9.0	1.4	9.9	10.1	10.0	8.3	1.1	8.1	8.1		1.4	8.3	8.2	
9/20/12	1.3	9.0	1.6	10.0	10.0	10.1	8.4	1.2	8.1	8.1		1.4	8.2	8.5	
9/20/12			1.3	10.5	10.5	10.5		1.1	8.1	8.1		1.4	8.2	8.1	
9/21/12	1.4	9.1	1.7	10.4	10.5	10.0	9.4	1.2	8.1	8.2		1.5	8.3	8.2	
9/21/12	1.3	8.9	1.6	1.6	10.0	10.0	8.3	1.3	8.0	8.1		1.6	8.1	8.0	
9/21/12			1.5	10.0	10.0	10.0		1.2	8.1	8.1		1.4	8.2	8.1	
9/22/12	1.4	9.0	1.5	8.5	10.6	10.6	9.2	1.4	8.2	8.1		1.5	8.2	8.1	
9/22/12	1.5	8.8	1.7	10.4	10.4	10.5	9.9	1.3	8.1	8.2		1.4	8.3	8.2	
9/22/12			1.5	11.0	10.5	10.5		1.3	8.1	8.0		1.4	8.2	8.3	
AVG:	1.3	9.0	1.5	8.3	10.3	10.3	8.5	1.2	8.1	8.2		Closed	1.4	8.3	8.2

O
n
s
e
a
l

Third fish way inspection for east fish ladder, east, west, and south entrances completed via automation system in fisheries office.